

# NRSE Series



# 6

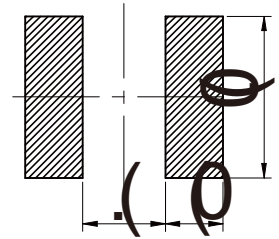
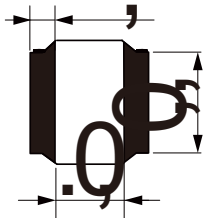
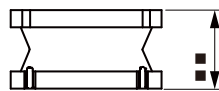
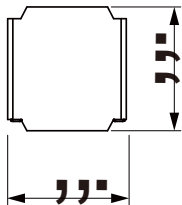
## CHARACTERISTICS

- 
- 

## APPLICATION

- 
- 

# 6



# 6

Part No	( $\mu$ H)	Tolerance	Satura on (A)	(A)	(m )
					45
					46
					65
	5.6				

Part No	( $\mu$ H)	Tolerance	Satura on (A)	(A)	(m )

° ° °

